

DES3 SERIES

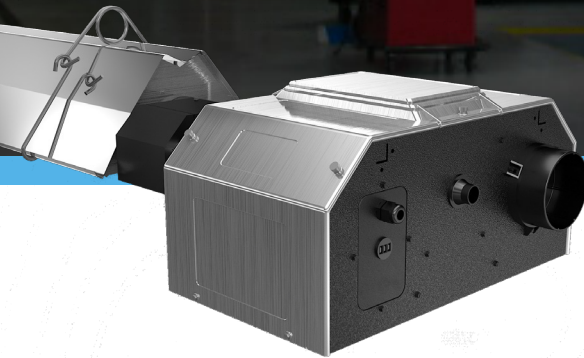
RE-VERBER-RAY[®]
by Detroit Radiant Products Company

INFRARED RADIANT HEATERS

ECONOMICAL, SINGLE-STAGE LOW INTENSITY TUBE HEATER

Optimal Fuel and Comfort Benefits with Unsurpassed Features

Streamlined for economy and designed without sacrificing performance, the DES3 Series represents quality at an economical price. This series utilizes a direct spark ignition system and hot-rolled steel emitter tubes.



BENEFITS OF HEATING WITH INFRARED

- Superior Comfort
- Indoor Air Quality
- Reduced Energy Consumption
- Flexibility
- Durability
- Radiant Efficiency

PRODUCT FEATURES

- Tool-free access to controls
- Serviceability while unit is operating
- Independent control-air-gas compartments with tool-free access
- Fitted ABS plastic air intake collar
- Separated air and gas burner chamber
- Stainless steel flexible gas connector included
- 3-piece independent compartment cover

DES3 SERIES

ECONOMICAL, SINGLE-STAGE LOW INTENSITY TUBE HEATER

PRODUCT SPECIFICATIONS



Input Range:
50,000 to 200,000 BTU/h



Radiant Tubes:
Hot-Rolled Steel



Lengths:
20-ft. to 60-ft.



Certification:
CSA, IAS, Indoor



Gas Type:
Natural (3.5" W.C.) or Propane (10.0" W.C.)



Limited Warranty:
1 (Components) - 3 (Tubes) - 5 (Burner)



Combustion Chamber:
4" Titanium Stabilized or Aluminized Steel

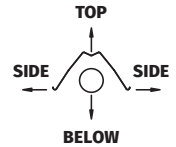


Electrical:
120V, 60 Hz. 120V Control
Amps: 1.7 Starting, 1.1 Running

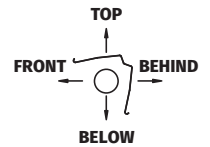
AVAILABLE DES3 MODELS & CLEARANCES

MODEL #	GAS ¹	INPUT BTU/H	LENGTH	WEIGHT	MOUNTING HEIGHTS ²	MOUNTING ANGLE				
						ANGLE	SIDE	TOP	BELOW	
DES3-20-50	Nat or Prop	50,000	21'-8"	120 lbs	9' to 14'	CLEARANCES TO COMBUSTIBLES ³ (INCHES)	0°	9	6	47
DES3-20-60	Nat or Prop	60,000	21'-8"	120 lbs	10' to 15'		0°	9	6	47
DES3-20-75	Nat or Prop	75,000	21'-8"	120 lbs	11' to 18'		0°	9	6	60
DES3-30-50	Nat or Prop	50,000	31'-4"	160 lbs	10' to 15'		0°	9	6	47
DES3-30-60	Nat or Prop	60,000	31'-4"	160 lbs	11' to 18'		0°	9	6	47
DES3-30-75	Nat or Prop	75,000	31'-4"	160 lbs	12' to 20'		0°	9	6	60
DES3-30-100	Nat or Prop	100,000	31'-4"	160 lbs	13' to 23'		0°	14	6	66
DES3-30-125	Nat or Prop	125,000	31'-4"	160 lbs	14' to 25'		0°	20	6	76
DES3-40-50	Nat or Prop	50,000	41'-0"	190 lbs	11' to 18'		0°	9	6	47
DES3-40-60	Nat or Prop	60,000	41'-0"	190 lbs	11' to 18'		0°	9	6	47
DES3-40-75	Nat or Prop	75,000	41'-0"	190 lbs	12' to 20'		0°	9	6	60
DES3-40-100	Nat or Prop	100,000	41'-0"	190 lbs	13' to 23'		0°	14	6	66
DES3-40-125	Nat or Prop	125,000	41'-0"	190 lbs	14' to 25'		0°	20	6	76
DES3-40-150	Nat or Prop	150,000	41'-0"	190 lbs	15' to 27'		0°	24	6	81
DES3-40-175	Nat or Prop	175,000	41'-0"	190 lbs	16' to 30'		0°	34	6	92
DES3-50-100	Nat or Prop	100,000	50'-8"	235 lbs	15' to 27'		0°	14	6	66
DES3-50-125	Nat or Prop	125,000	50'-8"	235 lbs	15' to 27'		0°	20	6	76
DES3-50-150	Nat or Prop	150,000	50'-8"	235 lbs	16' to 30'		0°	24	6	81
DES3-50-175	Nat or Prop	175,000	50'-8"	235 lbs	17' to 35'		0°	34	6	92
DES3-50-200	Nat or Prop	200,000	50'-8"	235 lbs	18' to 40'		0°	41	6	94
DES3-60-125	Nat or Prop	125,000	60'-4"	265 lbs	17' to 35'	0°	20	6	76	
DES3-60-150	Nat or Prop	150,000	60'-4"	265 lbs	17' to 35'	0°	24	6	81	
DES3-60-175	Nat or Prop	175,000	60'-4"	265 lbs	17' to 35'	0°	34	6	92	
DES3-60-200	Nat or Prop	200,000	60'-4"	265 lbs	18' to 40'	0°	41	6	94	

0° Mounting Angle



45° Mounting Angle³



³ Refer to DES3 Manual for additional information about clearances for 45° Mounting Angle, 0° w/ 1 Side Shield, 0° w/ 2 Side Shields, and 20 ft. from burner.

¹ Specify natural (Nat) or propane (Prop) gas.

² Factory recommended mounting heights are provided as a guideline. Actual conditions may dictate variations from the above data.

Always maintain the published clearances to combustibles. Not for residential use.
Clearances published in DES3 Series manual and on warning label supersede data shown on this brochure.



DETROIT RADIANT
PRODUCTS COMPANY

21400 Hoover Road, Warren, Michigan 48089 USA
+1.586.756.0950 | sales@drp-co.com

www.REVERBERRY.com



Form No. LBDES3_2M-0818 (PM)

